



Section : Stock

Sub-section : 6.20.000 - Reports Stock

Target audience : Store Rep/Manager | **Stock Control** | Administrator | Financial Controller | Management
 Industry type : Generic



Welcome to ClickPOS Video Tutorials

This tutorial is directed at any member of the company that requires stock listings.

The **Stock Reports** can be used to evaluate stock levels and costing. We will show you some of the predefined reports, however you can also extract stock records by creating your own report through the Report generator.



All rights reserved. ClickPOS Pty Ltd - Copyright -Australia 2008
 www.clickpos.com
 Modified : Oct 2008

My Company Pty Ltd

J.Smith (Administrator) Head Office 100 - training

ClickPOS



Home

Sale

Stock

Repairs

Reports

Accounts

Maintain

Logout

Sales Stock Finance Accounts Maintenance Mailout Performance

Reports



Branch Reports



Sales



Stock



Finance



Accounts



Maintenance



Mailout



Performance



Report Generator

To produce a Stock inventory report,
click **Reports**, then **Stock**.



Branch Reports



Sales



Stock



Finance



Accounts



Maintenance



Mailout



Performance



Report Generator



Stock Report

 Stock Report Snapshot ReportSelect Report Expand All Records OK Please select branches

- Brisbane (102) Los Angeles (700) San Francisco (900)
 Head Office (100) Melbourne (105) Sydney (106)
 London (800)

Stock Report

Stock Report Snapshot Report

Select Report Product List (2-1)

Report Help

Expand All Records

OK

Please select branches

- Brisbane (102) Los Angeles (700) San Francisco
- Head Office (100) Melbourne (105) Sydney (10)
- London (800)

Let's have a look at some of the reports available. We recommend you look through each report and see which fits your business process.

Stock Report

Stock Report Snapshot Report

Select Report Product List (2-1)

Report Help

Expand All Records

OK

Please select branches

- Brisbane (102)
- Head Office (100)
- London (800)

- Product List (2-1)
- Phones By Location (2-3-3)
- Sales Reorder Report (2-4)
- Stock Transit Report (2-5)
- Product Label For Shelves (2-6)
- Product Reorder Stock Report (2-7-1)
- Phone Reorder Stock Report (2-7-2)
- Phone Qty by Location and Supplier (2-8)
- Purchase Report (2-8)
- VIP Products List (2-10-1)
- VIP Phone List (2-10-2)
- Category Total by Location (2-11)
- Product Master Category Total by Location (2-12)
- Stock Reorder Report (2-13)
- Phone Purchase Report (2-14-1)
- Phone Purchase Report By Phone (2-14-2)
- Product Matrix (2-15)
- Phone Matrix (2-15)

Product List Report
Was previously Branch 2.1 Produce Product List
This report shows list of all products in the store



Stock Report

Stock Report Snapshot Report

Select Report: Product List (2-1)

Expand All Records

Please select branches

- Brisbane (102)
- Head Office (100)
- London (800)

- Product List (2-1)
- Phones By Location (2-3-3)
- Sales Reorder Report (2-4)
- Stock Transit Report (2-5)
- Product Label For Shelves (2-6)
- Product Reorder Stock Report (2-7-1)
- Phone Reorder Stock Report (2-7-2)
- Phone Qty by Location and Supplier (2-8)
- Purchase Report (2-9)
- VIP Products List (2-10-1)
- VIP Phone List (2-10-2)
- Category Total by Location (2-11)
- Product Master Category Total by Location (2-12)**
- Stock Reorder Report (2-13)
- Phone Purchase Report (2-14-1)
- Phone Purchase Report By Phone (2-14-2)
- Product Matrix (2-15)
- Phone Matrix (2-16)

Report Help

Product List Report
Was previously Branch 2.1 Produce Product List
This report shows list of all products in the store

Stock Report

Stock Report Snapshot Report

Select Report: Product Master Category Total by Location (2-12)

Expand All Records

Please select branches

- Brisbane (102)
- Los Angeles (700)
- San Francisco (900)
- Head Office (100)
- Melbourne (105)
- Sydney (106)
- London (800)

Report Help

Product Master Category Total By Location
Was previously Global 2.12 Product Master Category Total by Location

ClickPOS Online - Windows Internet Explorer
 http://216.14.207.106/pstestnet/reports/P53StockReportView.aspx?FromDate=26/10/2008&ToDate=26/10/2008&checked=true&rptName=2-12&rptDesc=Product Master Category

1 of 1 150% Find | Next Select a format Export

My Company Pty Ltd

Product Master Category Total by Location (2-12)

Description	Qty In Stock	Purchase Price
Head Office (196)		
No Master Category	102	\$4,591.00
Bgpord	10	\$1,050.00
Cell Accessorie	62	\$1,288.02
Office Products	18	\$2,754.00
PeiPay	3	\$38.85
Starter Kit	1	\$19.38
Branch Total at Head Office	196	\$9,741.25
Master Category Total		
No Master Category	102	\$4,591.00
Bgpord	10	\$1,050.00
Cell Accessorie	62	\$1,288.02
Office Products	18	\$2,754.00
PeiPay	3	\$38.85
Starter Kit	1	\$19.38
Grand Total	196	\$9,741.25

Execution Time: 0 seconds
 Report powered by www.clickpos.com Printed by JSmith on

The Product master category, basically lists items for the selected stores, and summarises by the products master category

ClickPOS Online - Windows Internet Explorer
 http://216.14.207.106/pstestnet/reports/P53StockReportView.aspx?FromDate=26/10/2008&ToDate=26/10/2008&checked=true&rptName=2-12&rptDesc=Product Master Category

1 of 1 150% Find | Next Select a format Export

My Company Pty Ltd

Product Master Category Total by Location (2-12)

Description	Qty In Stock	Purchase Price
Head Office (196)		
No Master Category	102	\$4,591.00
Bgpord	10	\$1,050.00
Cell Accessorie	62	\$1,288.02
Office Products	18	\$2,754.00
PeiPay	3	\$38.85
Starter Kit	1	\$19.38
Branch Total at Head Office	196	\$9,741.25
Master Category Total		
No Master Category	102	\$4,591.00
Bgpord	10	\$1,050.00
Cell Accessorie	62	\$1,288.02
Office Products	18	\$2,754.00
PeiPay	3	\$38.85
Starter Kit	1	\$19.38
Grand Total	196	\$9,741.25

Execution Time: 0 seconds
 Report powered by www.clickpos.com Printed by JSmith on

ClickPOS Online - Windows Internet Explorer
 http://216.14.207.106/pstestnet/reports/P53StockReportView.aspx?FromDate=26/10/2008&ToDate=26/10/2008&checked=true&rptName=2-12&rptDesc=Product Master Category

1 of 1 150% Find | Next Select a format Export

Ltd

er Category Total by Location (2-12)

	Qty In Stock	Purchase Price	RRP
	102	\$4,591.00	\$5,364.08
	10	\$1,050.00	\$1,890.00
	62	\$1,288.02	\$2,993.01
	18	\$2,754.00	\$3,762.00
	3	\$38.85	\$105.00
	1	\$19.38	\$25.00
lead Office	196	\$9,741.25	\$14,139.09
Total	102	\$4,591.00	\$5,364.08
	10	\$1,050.00	\$1,890.00
	62	\$1,288.02	\$2,993.01
	18	\$2,754.00	\$3,762.00
	3	\$38.85	\$105.00
	1	\$19.38	\$25.00
	196	\$9,741.25	\$14,139.09

www.clickpos.com Page 1 of 1
 Printed by JSmith on 26/10/2008 10:17:49 PM

ClickPOS Online - Windows Internet Explorer
 http://216.14.207.106/pstestnet/reports/P53StockReportView.aspx?FromDate=26/10/2008&ToDate=26/10/2008&checked=true&rptName=2-12&rptDesc=Product Master Category

1 of 1 150% Find | Next Select a format Export

Ltd

er Category Total by Location (2-12)

	Qty In Stock	Purchase Price	RRP
	102	\$4,591.00	\$5,364.08
	10	\$1,050.00	\$1,890.00
	62	\$1,288.02	\$2,993.01
	18	\$2,754.00	\$3,762.00
	3	\$38.85	\$105.00
	1	\$19.38	\$25.00
lead Office	196	\$9,741.25	\$14,139.09
Total	102	\$4,591.00	\$5,364.08
	10	\$1,050.00	\$1,890.00
	62	\$1,288.02	\$2,993.01
	18	\$2,754.00	\$3,762.00
	3	\$38.85	\$105.00
	1	\$19.38	\$25.00
	196	\$9,741.25	\$14,139.09

www.clickpos.com Page 1 of 1
 Printed by JSmith on 26/10/2008 10:17:49 PM



Stock Report



Stock Report Snapshot Report

Select Report Product List (2-1)

Expand All Records

OK

Please select branches

- Brisbane (102) Los Angeles (700) San Francisco (900)
- Head Office (100) Melbourne (105) Sydney (105)
- London (800)



Stock Report



Stock Report Snapshot Report

Select Report Phones By Location (2-3-3)

Expand All Records

OK

Please select branches

- Brisbane (102)
- Head Office (100)
- London (800)

- Product List (2-1)
- Phones By Location (2-3-3)**
- Sales Reorder Report (2-4)
- Stock Transit Report (2-5)
- Product Label For Shelves (2-6)
- Product Reorder Stock Report (2-7-1)
- Phone Reorder Stock Report (2-7-2)
- Phone Qty by Location and Supplier (2-8)
- Purchase Report (2-8)
- VIP Products List (2-10-1)
- VIP Phone List (2-10-2)
- Category Total by Location (2-11)
- Product Master Category Total by Location (2-12)
- Stock Reorder Report (2-13)
- Phone Purchase Report (2-14-1)
- Phone Purchase Report By Phone (2-14-2)
- Product Matrix (2-15)
- Phone Matrix (2-15)

Report Help

Phones by Location and Type Report
 Combined with Global 2.3 Phones by Location
 and 2.4 Phones by Type



Stock Report



Stock Report Snapshot Report

Select Report: Phones By Location (2-3-3)

Expand All Records:

Please select branches

Brisbane (102)

Head Office (100)

London (800)

- Product List (2-1)
- Phones By Location (2-3-3)
- Sales Reorder Report (2-4)
- Stock Transit Report (2-5)
- Product Label For Shelves (2-6)
- Product Reorder Stock Report (2-7)
- Phone Reorder Stock Report (2-8)
- Phone Qty by Location and Sales (2-9)
- Purchase Report (2-9)
- VIP Products List (2-10-1)
- VIP Phone List (2-10-2)
- Category Total by Location (2-11)
- Product Master Category Total by Location (2-12)
- Stock Reorder Report (2-13)
- Phone Purchase Report (2-14-1)
- Phone Purchase Report By Phone (2-14-2)
- Product Matrix (2-15)
- Phone Matrix (2-16)

Report Help

Phones by Location and Type Report
Combined with Global 2.3 Phones by Location and 2.4 Phones by Type

There are industry specific reports, such as the Phones by location report.



Stock Report



Stock Report Snapshot Report

Select Report: Phones By Location (2-3-3)

Expand All Records:

Please select branches

Brisbane (102)

Los Angeles (700)

San Francisco (900)

Head Office (100)

Melbourne (105)

Sydney (106)

London (800)

Report Help

Phones by Location and Type Report
Combined with Global 2.3 Phones by Location and 2.4 Phones by Type

ClickPOS Online - Windows Internet Explorer

http://216.14.207.106/psstestnet/reports/P53StockReportView.aspx?fromDate=26/10/2008&toDate=26/10/2008&checked=true&rpName=2-3-3&rpDesc=Phones By Location (2-3-3)

1 of 6 150% Find | Next Select a format Export

My Company Pty Ltd

Phones By Location (2-3-3)

Purchase Date	IMEI	Color	Supplier	EntryDate	Pack List No	On Transit	Transit From Branch
Head Office (480)							
<input type="checkbox"/> 3G - Vodafone Mobile Connect Card (2)							
14/03/2006	109		3	14/03/2006			
14/03/2006	110		3	14/03/2006			
Total							
<input type="checkbox"/> 7250 (3)							
14/04/2003	2323445454545454		Brightpoint	11/07/2005			Bisbane
14/04/2003	351212145544545		Brightpoint	14/04/2003			Bisbane
8/07/2003	123056678999	Orange	Brightpoint	8/07/2003	3425		
Total							
<input type="checkbox"/> Alcatel Easy HF (34)							
1/01/2000	54234						
2/01/2000	423423434						
9/01/2000	099		Vodafone Pty Ltd.	9/01/2000	099		
9/01/2000	2354		Vodafone Pty Ltd.	9/01/2000	356		
9/01/2000	345		Vodafone Pty Ltd.	9/01/2000	3465		
9/01/2000	3453245	230 - Silver	Vodafone Pty Ltd.	9/01/2000	3465345		
9/01/2000	3456346345	230 - Silver	Vodafone Pty Ltd.	9/01/2000	3465345		
9/01/2000	3465		Vodafone Pty Ltd.	9/01/2000	3654		
15/01/2000	423423	230 - Silver	Vodafone Pty Ltd.	27/01/2000			
19/01/2000	490508519190751	230 - Silver	Vodafone Pty Ltd.	19/01/2000			

The phones are displayed by each IMEI number, as stock has serialised tracking.

ClickPOS Online - Windows Internet Explorer

http://216.14.207.106/psstestnet/reports/P53StockReportView.aspx?fromDate=26/10/2008&toDate=26/10/2008&checked=true&rpName=2-3-3&rpDesc=Phones By Location (2-3-3)

1 of 6 150% Find | Next Select a format Export

Purchase Date	IMEI	Color	Supplier	EntryDate	Pack List No	On Transit	Transit From Branch
3/01/2001	490546304265136	230 - Silver	Vodafone Pty Ltd.	22/02/2001			
5/08/2001	11122233336966		Vodafone Pty Ltd.	5/08/2001	222		
5/08/2001	33333		Vodafone Pty Ltd.	5/08/2001	22222		
Total							
<input type="checkbox"/> Alcatel Pocket (1)							
24/09/2002	333444		Beyond	24/09/2002			
Total							
<input type="checkbox"/> Blackberry 7290 (2)							
14/03/2006	103	Beck	Brightpoint	14/03/2006	123		
14/03/2006	104	Beck	Brightpoint	14/03/2006	123		
Total							
<input type="checkbox"/> Contract Only (9)							
11/09/2004	1		Celnet	11/09/2004			
11/09/2004	10		Celnet	11/09/2004			
11/09/2004	3		Celnet	11/09/2004			
11/09/2004	4		Celnet	11/09/2004			
11/09/2004	5		Celnet	11/09/2004			
11/09/2004	6		Celnet	11/09/2004			
11/09/2004	7		Celnet	11/09/2004			
11/09/2004	8		Celnet	11/09/2004			
11/09/2004	9		Celnet	11/09/2004			
Total							
<input type="checkbox"/> CRNOTE (25)							
19/11/2001	CR350144303299038	Orange	Celnet	17/11/2005	2589		Bisbane
12/05/2005	CRp888	Purple	Brightpoint	12/05/2005			

ClickPOS Online - Windows Internet Explorer

http://216.14.207.106/pstestnet/reports/P53tcdReportView.aspx?FromDate=26/10/2008&ToDate=26/10/2008&checked=true&rpName=2-3-30&rpDesc=Phones By Location (2<

1 of 6 150% Find | Next Select a format Export

Purchase Date	IMEI	Color	Supplier	EntryDate	Pack Lot No	On Trans	Transit From Branch
Total							
6							
Total							
DemcPh2 (11)							
24/03/2005	354932002369029		3	24/03/2005		000	
24/03/2005	354932002686976		3	24/03/2005		000	
24/03/2005	354932002731210		3	24/03/2005		000	
24/03/2005	354932002739122		3	24/03/2005		000	
24/03/2005	354932002797302		3	24/03/2005		000	
24/03/2005	354932002804900		3	24/03/2005		000	
24/03/2005	354932002905756		3	24/03/2005		000	
24/03/2005	354932002906143		3	24/03/2005		000	
24/03/2005	354932002959126		3	24/03/2005		000	
24/03/2005	354932002970123		3	24/03/2005		000	
24/03/2005	354932004131476		3	24/03/2005		000	
Total							
ERICSSON 768 (1)							
5/08/2001	333	Pnk	Vodafone Pty Ltd	5/08/2001		222	
Total							
ERICSSON 788e (1)							
2/08/2000	NC0110FCBC	250 - Black	Beyond International	22/02/2001			
Total							

Execution Time: 0 seconds
Report powered by www.clickpos.com

ClickPOS Online - Windows Internet Explorer

http://216.14.207.106/pstestnet/reports/P53tcdReportView.aspx?FromDate=26/10/2008&ToDate=26/10/2008&checked=true&rpName=2-3-30&rpDesc=Phones By Location (2<

1 of 6 150% Find | Next Select a format Export

Purchase Date	IMEI	Color	Supplier	EntryDate	Pack Lot No	On Trans	Transit From Branch
Total							
6							
Total							
DemcPh2 (11)							
24/03/2005	354932002369029		3	24/03/2005		000	
24/03/2005	354932002686976		3	24/03/2005		000	
24/03/2005	354932002731210		3	24/03/2005		000	
24/03/2005	354932002739122		3	24/03/2005		000	
24/03/2005	354932002797302		3	24/03/2005		000	
24/03/2005	354932002804900		3	24/03/2005		000	
24/03/2005	354932002905756		3	24/03/2005		000	
24/03/2005	354932002906143		3	24/03/2005		000	
24/03/2005	354932002959126		3	24/03/2005		000	
24/03/2005	354932002970123		3	24/03/2005		000	
24/03/2005	354932004131476		3	24/03/2005		000	
Total							
ERICSSON 768 (1)							
5/08/2001	333	Pnk	Vodafone Pty Ltd	5/08/2001		222	
Total							
ERICSSON 788e (1)							
2/08/2000	NC0110FCBC	250 - Black	Beyond International	22/02/2001			
Total							

Execution Time: 0 seconds
Report powered by www.clickpos.com

ClickPOS Online - Windows Internet Explorer

http://216.14.207.106/pstestnet/reports/P53stockReportView.aspx?fromDate=26/10/2008&toDate=26/10/2008&checked=true&rpName=2-3-30&rpDesc=Phones By Location (2<

1 of 6 150% Find | Next Select a format Export

Item	Supplier	Entry Date	Pack Lot No	On Transit	Transit From Branch	Purchase Price	Sale Price	
						25	-47,216.53	\$0.00
3		24/03/2005	000			\$0.00	\$0.00	
3		24/03/2005	000			\$0.00	\$0.00	
3		24/03/2005	000			\$0.00	\$0.00	
3		24/03/2005	000			\$0.00	\$0.00	
3		24/03/2005	000			\$0.00	\$0.00	
3		24/03/2005	000			\$0.00	\$0.00	
3		24/03/2005	000			\$0.00	\$0.00	
3		24/03/2005	000			\$0.00	\$0.00	
3		24/03/2005	000			\$0.00	\$0.00	
3		24/03/2005	000			\$0.00	\$0.00	
3		24/03/2005	000			\$0.00	\$0.00	
						11	\$0.00	\$0.00
	Vodafone Pty Ltd	5/08/2001	222			\$10.00	\$0.00	
						1	\$10.00	\$0.00
	- Back Beyond International	22/02/2001				\$455.00	\$0.00	
						1	\$455.00	\$0.00

Page 1 of 6
Printed by JSmith on 26/10/2008 9:41:50 PM

Internet 100%

ClickPOS Online - Windows Internet Explorer

http://216.14.207.106/pstestnet/reports/P53stockReportView.aspx?fromDate=26/10/2008&toDate=26/10/2008&checked=true&rpName=2-3-30&rpDesc=Phones By Location (2<

1 of 6 150% Find | Next Select a format Export

Item	Supplier	Entry Date	Pack Lot No	On Transit	Transit From Branch	Purchase Price	Sale Price	
						25	-47,216.53	\$0.00
3		24/03/2005	000			\$0.00	\$0.00	
3		24/03/2005	000			\$0.00	\$0.00	
3		24/03/2005	000			\$0.00	\$0.00	
3		24/03/2005	000			\$0.00	\$0.00	
3		24/03/2005	000			\$0.00	\$0.00	
3		24/03/2005	000			\$0.00	\$0.00	
3		24/03/2005	000			\$0.00	\$0.00	
3		24/03/2005	000			\$0.00	\$0.00	
3		24/03/2005	000			\$0.00	\$0.00	
3		24/03/2005	000			\$0.00	\$0.00	
3		24/03/2005	000			\$0.00	\$0.00	
3		24/03/2005	000			\$0.00	\$0.00	
						11	\$0.00	\$0.00
	Vodafone Pty Ltd	5/08/2001	222			\$10.00	\$0.00	
						1	\$10.00	\$0.00
	- Back Beyond International	22/02/2001				\$455.00	\$0.00	
						1	\$455.00	\$0.00

Page 1 of 6
Printed by JSmith on 26/10/2008 9:41:50 PM

Internet 100%



Stock Report



Stock Report Snapshot Report

Select Report Category Total by Location (2-11)

Report Help

Product Category By Location
Was previously Global 2.11 Product Category Total by Location

Expand All Records

OK

Please select branches

- Brisbane (102) Los Angeles (700) San Francisco (908)
- Head Office (100) Melbourne (105) Sydney (105)
- London (800)



Stock Report



Stock Report Snapshot Report

Select Report Product Matrix (2-15)

Report Help

Product Matrix
Use this report to view products available in stock for selected branch(s)

Expand All Records

OK

Please select branches

- Brisbane (102)
 - Head Office (100)
 - London (800)
- Product List (2-1)
 - Phones By Location (2-3-3)
 - Sales Reorder Report (2-4)
 - Stock Transit Report (2-5)
 - Product Label For Shelves (2-6)
 - Product Reorder Stock Report (2-7-1)
 - Phone Reorder Stock Report (2-7-2)
 - Phone Qty by Location and Supplier (2-8)
 - Purchase Report (2-8)
 - VIP Products List (2-10-1)
 - VIP Phone List (2-10-2)
 - Category Total by Location (2-11)
 - Product Master Category Total by Location (2-12)
 - Stock Reorder Report (2-13)
 - Phone Purchase Report (2-14-1)
 - Phone Purchase Report By Phone (2-14-2)
 - Product Matrix (2-15)
 - Phone Matrix (2-15)



Stock Report

Stock Report Snapshot Report

Select Report Product Matrix (2-15)

Report Help

Expand All Records

Product Matrix

Use this report to view products available in stock for selected branch(s)

OK

Please select branches

- Brisbane (102) Los Angeles (700) San Francisco (900)
 Head Office (100) Melbourne (105) Sydney (105)
 London (800)

Let's select another report displaying **all stores** that we have access to.

Tick to view stock being held at following stores.

Please note that the store names displayed, are the stores that you've been given permission to access.



Stock Report

Stock Report Snapshot Report

Select Report Product Matrix (2-15)

Report Help

Expand All Records

Product Matrix

Use this report to view products available in stock for selected branch(s)

OK

Please select branches

- Brisbane (102) Los Angeles (700) San Francisco (900)
 Head Office (100) Melbourne (105) Sydney (105)
 London (800)

Stock Report

Stock Report Snapshot Report

Select Report: Product Matrix (2-15)

Expand All Records

OK

Plot select branches

- Brisbane (102) Los Angeles (700) San Francisco (908)
- Head Office (100) Melbourne (105) Sydney (105)
- London (800)

Report Help

Product Matrix
Use this report to view products available in stock for selected branch(es)

My Company Pty Ltd Product Matrix

You will instantly view the details of all stock available in all stores.

Branch/Product	Brisbane	Head Office	London	Los Angeles	Melbourne	San Francisco
\$29.95 Recharge Card						1
\$99.95 Recharge Card						1
7250 Life Size Pack						5
A/C ADAPT WITH FEMALE OIG						9
A1000						2
AC FAST CHARGER SAMSUNG S			19			
ADB 1 port modum			5			
ADB 4 Port WiFi Modum			5			
ALC EASYVIEW MAX BATT LI		1	3			2
ANT MDT 5200/7200		2		5		
Antenna Ericson T28		20				
BAT MOTO STARTAC NIMH SLI						1
BAT SONYERIC NIMH SLI			2			
BATT ERIC 788 SLIM600MAH			9			
BATT MOTO d160 NIMH 1200M			1			
BATT NOKIA 100 NIMH						1
BATT NOKIA 232						1
CAB CONNECT NOKIA 6110/51		2				
CRNOTE			6			2
Demo		5		3		15
DEMO PACK				8		4

ClickPOS Online - Windows Internet Explorer

http://216.14.207.186/psbtestnet/reports/PSSStockReportView.aspx?fromDate=26/10/2008&toDate=26/10/2008&checked=true& rptName=2-15&rptDesc=Product Matrix (2-15)8b

1 of 2 150% Find | Next Select a format Export

Branch/Product	Los Angeles	Melbourne	San Francisco	Sydney	Product Total
\$29.95 Recharge Card			1		1
\$99.95 Recharge Card			1		1
7250 Lifestyle Pack			5		5
AC ADAPT WITH FEMALE OIG			9	1	14
A1000			2	4	6
AC FAST CHARGER SAMSUNG S					19
ADSL 1 port modem					5
ADSL 4 Port WiFi Modem					5
ALC EASYVIEW MAX BATT LI			2	1	7
ANT MCT 5200/7200	5				7
Antenna Ericson T28					20
BAT MOTO STARTAC NIMH SLI			1	2	3
BAT SONYERIC NIMH SLI					2
BATT ERIC 788 SLIM680MAH					9
BATT MOTO d160 NIMH 1200M					1
BATT NOKIA 100 NIMH			1	1	2
BATT NOKIA 232			1		1
CAB CONNECT NOKIA 6110/51					2
CRNOTE			2		8
Demo	3		15		23
DEMO PACK	8		4	10	22

Internet 100%

ClickPOS Online - Windows Internet Explorer

http://216.14.207.186/psbtestnet/reports/PSSStockReportView.aspx?fromDate=26/10/2008&toDate=26/10/2008&checked=true& rptName=2-15&rptDesc=Product Matrix (2-15)8b

1 of 2 150% Find | Next Select a format Export

Branch/Product	Los Angeles	Melbourne	San Francisco	Sydney	Product Total
\$29.95 Recharge Card			1		1
\$99.95 Recharge Card			1		1
7250 Lifestyle Pack			5		5
AC ADAPT WITH FEMALE OIG			9	1	14
A1000			2	4	6
AC FAST CHARGER SAMSUNG S					19
ADSL 1 port modem					5
ADSL 4 Port WiFi Modem					5
ALC EASYVIEW MAX BATT LI			2	1	7
ANT MCT 5200/7200	5				7
Antenna Ericson T28					20
BAT MOTO STARTAC NIMH SLI			1	2	3
BAT SONYERIC NIMH SLI					2
BATT ERIC 788 SLIM680MAH					9
BATT MOTO d160 NIMH 1200M					1
BATT NOKIA 100 NIMH			1	1	2
BATT NOKIA 232			1		1
CAB CONNECT NOKIA 6110/51					2
CRNOTE			2		8
Demo	3		15		23
DEMO PACK	8		4	10	22

Internet 100%

ClickPOS Online - Windows Internet Explorer

http://216.14.207.186/psbtestnet/reports/PSSStockReportView.aspx?fromDate=26/10/2008&toDate=26/10/2008&checked=true&rptName=2-15&rptDesc=Product Matrix (2-15)&b

1 of 2 150% Find Next Select a format Export

Branch/Product	Los Angeles	Melbourne	San Francisco	Sydney	Product Total
PePad Kt - LG 8120				322	322
PePad Kt - Motorola C975				38	38
Prepaid Barter Kt Home		3			3
Prepay Connection Pack		3			6
QUALCOMM QCP860 COMPLETE					2
Radio Mate Device					4
Recharge Card \$20		15		1	19
Samsung Battery - D500					1
Samsung Belt clip					1
SAMSUNG SCH411 AC TRAVEL	1				1
Sim Card					10
sim					122
Starter Kt CDMA Pre Paid					1
Starter Pack Nok 8850-Case/PHF/Car Charger					2
Tel Fax Surge Pt	6				6
Test				10	10
Uniden CP4600 Ncd 800mA			1		1
Uniden DSS7965					18
V3 Battery					3

Sub totals for all stores are calculated for you.

Page 1 of 2
Printed by JSmith on 25/10/2008 9:51:41 PM

Internet 100%

ClickPOS Online - Windows Internet Explorer

http://216.14.207.186/psbtestnet/reports/PSSStockReportView.aspx?fromDate=26/10/2008&toDate=26/10/2008&checked=true&rptName=2-15&rptDesc=Product Matrix (2-15)&b

1 of 2 150% Find Next Select a format Export

Branch/Product	Los Angeles	Melbourne	San Francisco	Sydney	Product Total
PePad Kt - LG 8120				322	322
PePad Kt - Motorola C975				38	38
Prepaid Barter Kt Home		3			3
Prepay Connection Pack		3			6
QUALCOMM QCP860 COMPLETE					2
Radio Mate Device					4
Recharge Card \$20		15		1	19
Samsung Battery - D500					1
Samsung Belt clip					1
SAMSUNG SCH411 AC TRAVEL	1				1
Sim Card					10
sim					122
Starter Kt CDMA Pre Paid					1
Starter Pack Nok 8850-Case/PHF/Car Charger					2
Tel Fax Surge Pt	6				6
Test				10	10
Uniden CP4600 Ncd 800mA			1		1
Uniden DSS7965					18
V3 Battery					3

Page 1 of 2
Printed by JSmith on 25/10/2008 9:51:41 PM

Internet 100%

PSSStockReportView.aspx?fromDate=26%2F10%2F2008&toDate=26%2F10%2F2008&checked=true&rptN

ClickPOS Online - Windows Internet Explorer

http://216.14.207.186/pstestnet/reports/PSSStockReportView.aspx?fromDate=26/10/2008&toDate=26/10/2008&checked=true& rptName=2-15& rptDesc=Product Matrix (2-15)&b

2 of 2 150% Find | Next Select a format Export

Next Page

Branch/Product	Brisbane	Head Office	London	Los Angeles	Melbourne	San Francisco
Branch Total	225	181	67	10	186	25

Execution Time: 0 seconds
Report powered by www.clickpos.com

PSSStockReportView.aspx?fromDate=26%2F10%2F2008&toDate=26%2F10%2F2008&checked=true&rptN Internet 100%

ClickPOS Online - Windows Internet Explorer

http://216.14.207.186/pstestnet/reports/PSSStockReportView.aspx?fromDate=26/10/2008&toDate=26/10/2008&checked=true& rptName=2-15& rptDesc=Product Matrix (2-15)&b

2 of 2 150% Find | Next Select a format Export

Branch/Product	Brisbane	Head Office	London	Los Angeles	Melbourne	San Francisco
Branch Total	225	181	67	10	186	25

Execution Time: 0 seconds
Report powered by www.clickpos.com

Internet 100%

ClickPOS Online - Windows Internet Explorer

http://216.14.207.186/pstestnet/reports/PSStdcReportView.aspx?FromDate=26/10/2008&ToDate=26/10/2008&checked=true&rptName=2-15&rptDesc=Product Matrix (2-15)&

1 of 2 150% Find | Next Select a format Export

My Company Pty Ltd

Product Matrix

You can also Export the report in many ways, including Excel.

Branch/Product	Bsbane	Head Office	Melbourne	San Francisco
\$29.95 Recharge Card				1
\$99.95 Recharge Card				1
7250 Lifestyle Pack			5	
AC ADAPT WITH FEMALE CIG	2	2		9
A1000				2
AC FAST CHARGER SAMBUNG B		19		
ADBL 1 port modem		5		
ADBL 4 Port WiFi Modem		5		
ALC EASYVIEWMAX BATT LI	1	3		2
ANT MOT 5200/7200	2		5	
Antenna Ericson T28	20			
BAT MOTO STARTAC NIMH SLI				1
BAT SONYERIC NIMH SLI		2		
BATT ERIC 788 SLIM680MAH		9		
BATT MOTO d160 NIMH 1200M		1		
BATT NOKIA 100 NIMH				1
BATT NOKIA 232				1
CAB CONNECT NOKIA 6110/51	2			
CRNOTE		6		2
Demo	5		3	15
DEMO PACK			8	4

Internet 100%

ClickPOS Online - Windows Internet Explorer

http://216.14.207.186/pstestnet/reports/PSStdcReportView.aspx?FromDate=26/10/2008&ToDate=26/10/2008&checked=true&rptName=2-15&rptDesc=Product Matrix (2-15)&

1 of 2 150% Find | Next Select a format Export

My Company Pty Ltd

Product Matrix

Select a format

- Select a format
- XML file with report data
- CSV (comma delimited)
- TIFF file
- Acrobat (PDF) file
- Web archive
- Excel

Branch/Product	Bsbane	Head Office	Melbourne	San Francisco
\$29.95 Recharge Card				1
\$99.95 Recharge Card				1
7250 Lifestyle Pack			5	
AC ADAPT WITH FEMALE CIG	2	2		9
A1000				2
AC FAST CHARGER SAMBUNG B		19		
ADBL 1 port modem		5		
ADBL 4 Port WiFi Modem		5		
ALC EASYVIEWMAX BATT LI	1	3		2
ANT MOT 5200/7200	2		5	
Antenna Ericson T28	20			
BAT MOTO STARTAC NIMH SLI				1
BAT SONYERIC NIMH SLI		2		
BATT ERIC 788 SLIM680MAH		9		
BATT MOTO d160 NIMH 1200M		1		
BATT NOKIA 100 NIMH				1
BATT NOKIA 232				1
CAB CONNECT NOKIA 6110/51	2			
CRNOTE		6		2
Demo	5		3	15
DEMO PACK			8	4

Internet 100%

ClickPOS Online - Windows Internet Explorer
 http://216.14.207.186/psstestnet/reports/PSStdcReportView.aspx?FromDate=26/10/2008&ToDate=26/10/2008&checked=true& rptName=2-15& rptDesc=Product Matrix (2-15)&

1 of 2 150% Find | Next Select a format Export

My Company Pty Ltd
Product Matrix

Branch/Product	Bsbare	Head Office		Melbourne	San Francisco
\$29.95 Recharge Card					1
\$99.95 Recharge Card					1
7250 Lifestyle Pack					5
AC ADAPT WITH FEMALE CIG	2	2			9
A1000					2
AC FAST CHARGER SAMBUNG B		19			
ADBL 1 port modem		5			
ADBL 4 Port WiFi Modem		5			
ALC EASYVIEWMAX BATT LI	1	3			2
ANT MOT 5200/7200	2		5		
Antenna Ericson T28	20				
BAT MOTO STARTAC NIMH SLI					1
BAT SONYERIC NIMH SLI		2			
BATT ERIC 788 SLIM680MAH		9			
BATT MOTO d160 NIMH 1200M		1			
BATT NOKIA 100 NIMH					1
BATT NOKIA 232					1
CAB CONNECT NOKIA 6110/51	2				
CRNOTE		6			2
Demo	5		3		15
DEMO PACK			8		4

Internet 100%

ClickPOS Online - Windows Internet Explorer
 http://216.14.207.186/psstestnet/reports/PSStdcReportView.aspx?FromDate=26/10/2008&ToDate=26/10/2008&checked=true& rptName=2-15& rptDesc=Product Matrix (2-15)&

1 of 2 150% Find | Next Excel Export

My Company Pty Ltd
Product Matrix

Branch/Product	Bsbare	Head Office	London	Los Angeles	Melbourne	San Francisco
\$29.95 Recharge Card						1
\$99.95 Recharge Card						1
7250 Lifestyle Pack						5
AC ADAPT WITH FEMALE CIG	2	2				9
A1000						2
AC FAST CHARGER SAMBUNG B		19				
ADBL 1 port modem		5				
ADBL 4 Port WiFi Modem		5				
ALC EASYVIEWMAX BATT LI	1	3				2
ANT MOT 5200/7200	2			5		
Antenna Ericson T28	20					
BAT MOTO STARTAC NIMH SLI						1
BAT SONYERIC NIMH SLI		2				
BATT ERIC 788 SLIM680MAH		9				
BATT MOTO d160 NIMH 1200M		1				
BATT NOKIA 100 NIMH						1
BATT NOKIA 232						1
CAB CONNECT NOKIA 6110/51	2					
CRNOTE		6				2
Demo	5			3		15
DEMO PACK				8		4

Internet 100%

ClickPOS Online - Windows Internet Explorer

http://216.14.207.186/psstestnet/reports/PSStockReportView.aspx?FromDate=26/10/2008&toDate=26/10/2008&checked=true& rptName=2-158& rptDesc=Product Matrix (2-15)&

1 of 2 150% Find | Next Excel Export

My Company Pty Ltd

Product Matrix

Branch/Product	Bsbare	Head Office	London	Los Angeles	Melbourne	San Francisco
\$29.95 Recharge Card						1
\$99.95 Recharge Card						1
7250 Lifestyle Pack						5
AC ADAPT WITH FEMALE CIG	2	2				9
A1000						2
AC FAST CHARGER SAMBUNG B			19			
ADBL 1 port modem			5			
ADBL 4 Port WiFi Modem			5			
ALC EASYVIEWMAX BATT LI	1	3				2
ANT MOT 5200/7200	2			5		
Antenna Ericson T28	20					
BAT MOTO STARTAC NIMH SLI						1
BAT SONYERIC NIMH SLI			2			
BATT ERIC 788 SLIM680MAH			9			
BATT MOTO d160 NIMH 1200M			1			
BATT NOKIA 100 NIMH						1
BATT NOKIA 232						1
CAB CONNECT NOKIA 6110/51	2					
CRNOTE			6			2
Demo	5			3		15
DEMO PACK				8		4

http://216.14.207.186/psstestnet/reports/PSStockReportView.aspx?FromDate=26/10/2008&toDate=26/10/2008&checked=true& rptName=2-158& rptDesc=Product Matrix (2-15)&


Internet 100%

http://216.14.207.186/psstestnet/Reserved.ReportView.aspx?ReportName=2-158&ReportDesc=Product Matrix (2-15)&


Page Tools

File Download

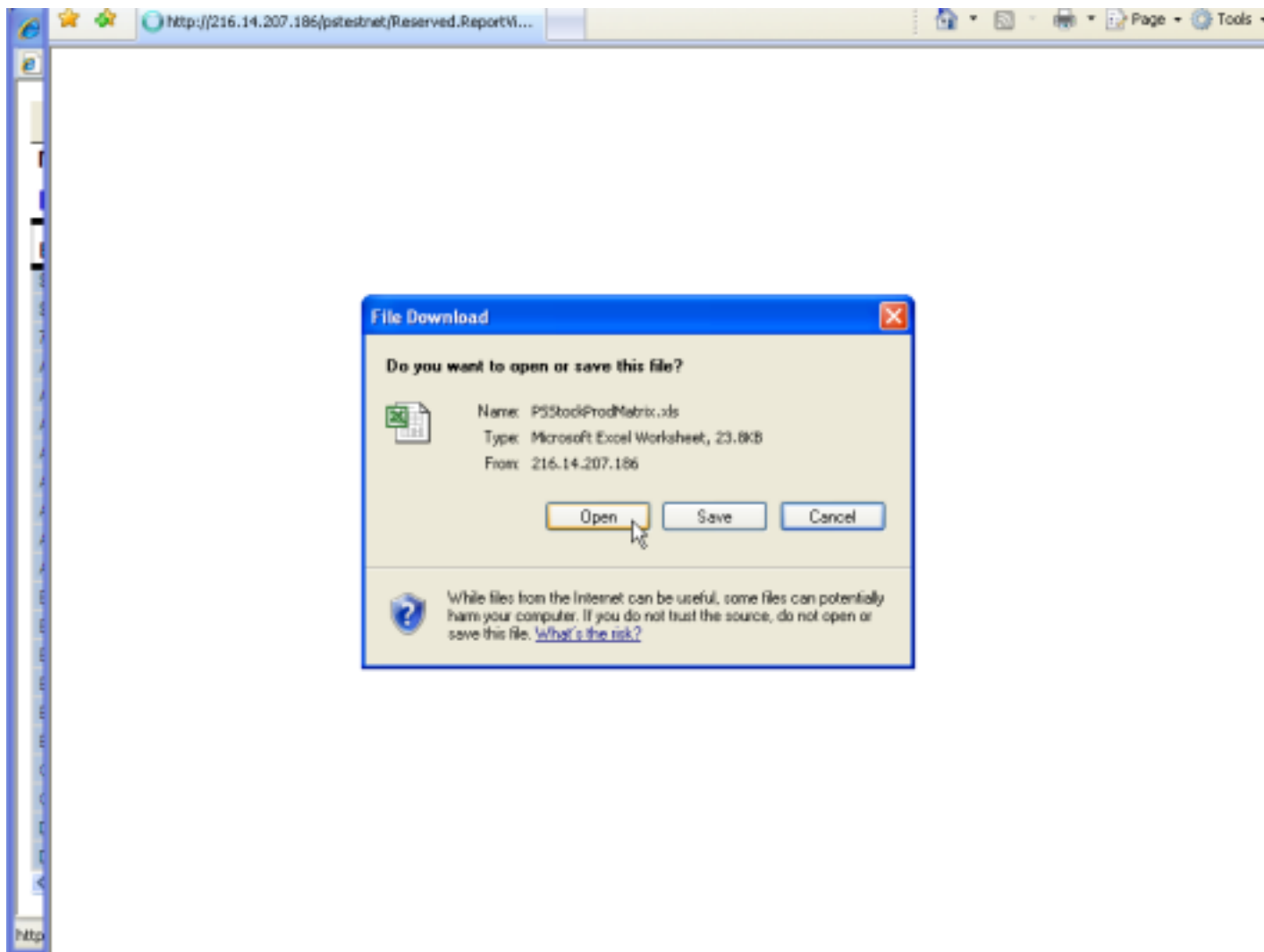
Do you want to open or save this file?

 Name: PSStockProdMatrix.xls
Type: Microsoft Excel Worksheet, 23.8KB
From: 216.14.207.186

Open Save Cancel

 While files from the Internet can be useful, some files can potentially harm your computer. If you do not trust the source, do not open or save this file. [What's the risk?](#)

http



Microsoft Excel - PSStockProdMatrix[1]

File Edit View Insert Format Tools Data Window Help

My Company Pty Ltd

	A	B	C	D	E	F	G	H	I	J	K	L
1	My Company Pty Ltd											
3	Product Matrix											
4	Branch/Product	Wines	Food/Other	Liquor	Low Alcohol	Alcoholic	See Product	Other	Product Total			
5	25.95 Package Card						5					5
6	25.95 Package Card						5					5
7	7.58 Single Rot						5					5
8	AC 100% BOTTLED/COG	2	2				4			1		14
9	AC99						2				4	4
10	AC 100% HARVEST DAMASCUS			19								19
11	AC 1 year/old			5								5
12	AC 4 year/old			5								5
13	AC 100% VINO MATTU	5	5				2			1		7
14	AC 100% VINO	2			5							7
15	AC 100% VINO	29										29
16	AC 100% VINO						5				2	2
17	AC 100% VINO			2								2
18	AC 100% VINO			5								5
19	AC 100% VINO			5								5
20	AC 100% VINO						5				1	2
21	AC 100% VINO						5					5
22	AC 100% VINO	2										2
23	AC 100% VINO			4			2					6
24	AC 100% VINO	5			2		19					24
25	AC 100% VINO				4						16	22
26	AC 100% VINO						27					27
27	AC 100% VINO				5							5
28	AC 100% VINO				5							5
29	AC 100% VINO				2						2	4
30	AC 100% VINO			5								5
31	AC 100% VINO						12					12
32	AC 100% VINO											5

Ready NUM

Microsoft Excel - PSStockProdMatrix[1]

File Edit View Insert Format Tools Data Window Help

100%

A3 Product Matrix

Branch/Product	Willes	West Oaks	London	Los Angeles	Missouri	San Francisco	Seattle	Product Total
25.95 Package Card					5			5
25.95 Package Card					5			5
1258 1/2pk Red					5			5
AC ADPRT WITH PDALECG	2	2					1	14
AG99					2		4	4
AC NOTE HANDBY CARDING			19					19
AGL 1 perforated			5					5
AGL 4 Perforated			5					5
ALZ DCOV/ENR/MTT U	5	5			2		1	7
AMMOT/300/TM	2			5				7
Johnson Brown TR		29						29
MTMOT/COFTE HANGLI					5		2	2
MTMOT/ENR HANGLI			2					2
MTT 2PK 7M CLEAR/WH			9					9
MTT MOTO/NO WH/DOEM			5					5
MTT MOTO/NO WH					5		1	2
MTT MOTO/212					5			5
CARDOMET/NO/4/1/51		2						2
C/NOTE			4		2			6
Box	5		2		19			24
250 RE 1				4			16	20
2x4-Top 2PK TR 4x					27			27
201 IMP/AFD/AGDBM				5				5
201 IMP/AFD/AGDBM/2PK				5				5
2PK 2/2 1/2 W/2/2/1/7			2		2		2	6
200x 217 2x2 1/2 pad			5					5
201/4/2/TE HAN/NO/1/6/10					12			12
201/4/2/TE HAN/NO/1/6/10/4							1	1

Ready NUM

Microsoft Excel - PSStockProdMatrix[1]

File Edit View Insert Format Tools Data Window Help

100%

A3 Product Matrix

Branch/Product	Willes	West Oaks	London	Los Angeles	Missouri	San Francisco	Seattle	Product Total
25.95 Package Card					5			5
25.95 Package Card					5			5
1258 1/2pk Red					5			5
AC ADPRT WITH PDALECG	2	2					1	14
AG99					2		4	4
AC NOTE HANDBY CARDING			19					19
AGL 1 perforated			5					5
AGL 4 Perforated			5					5
ALZ DCOV/ENR/MTT U	5	5			2		1	7
AMMOT/300/TM	2			5				7
Johnson Brown TR		29						29
MTMOT/COFTE HANGLI					5		2	2
MTMOT/ENR HANGLI			2					2
MTT 2PK 7M CLEAR/WH			9					9
MTT MOTO/NO WH/DOEM			5					5
MTT MOTO/NO WH					5		1	2
MTT MOTO/212					5			5
CARDOMET/NO/4/1/51		2						2
C/NOTE			4		2			6
Box	5		2		19			24
250 RE 1				4			16	20
2x4-Top 2PK TR 4x					27			27
201 IMP/AFD/AGDBM				5				5
201 IMP/AFD/AGDBM/2PK				5				5
2PK 2/2 1/2 W/2/2/1/7			2		2		2	6
200x 217 2x2 1/2 pad			5					5
201/4/2/TE HAN/NO/1/6/10					12			12
201/4/2/TE HAN/NO/1/6/10/4							1	1

Ready NUM

Done. All data is now displayed in Excel format.

Let's zoom into the report.

Microsoft Excel - PSStockProdMatrix[1]

File Edit View Insert Format Tools Data Window Help

Product Matrix

My Company Pty Ltd

Product Matrix

Branch/Product	Brisbane	Head Office	London	Los Angeles	Melbourne	Product Total
\$29.95 Recharge Card					5	5
\$99.95 Recharge Card					5	5
7250 Lifestyle Pack					5	5
A/C ADAPT WITH FEMALE CIG	2	2				4
A1000					2	2
AC FAST CHARGER SAMSUNG S			19			19
ADSL 1 port modum			5			5
ADSL 4 Port WiFi Modum			5			5
ALC EASY/VIEW/MAX BATT U	1	2			2	5
ANT MOT 5200/7200	2			5		7
Antenna Ericsson T28	20					20
BAT MOTO STARTAC NIMH SU					5	5
BAT MOTO STARTAC NIMH SU					2	2
BAT MOTO STARTAC NIMH SU					2	2
BAT MOTO STARTAC NIMH SU					5	5
BAT MOTO STARTAC NIMH SU					5	5
CARD MOTO STARTAC NIMH SU	2					2
CARD MOTO STARTAC NIMH SU			4		2	6
Card	5		2		19	26
Card				4	4	8
Card				27		27
Card				5		5
Card				2		2
Card				2		2
Card				2		2
Card				12		12
Card					1	1

Ready NUM

Microsoft Excel - PSStockProdMatrix[1]

File Edit View Insert Format Tools Data Window Help

Product Matrix

My Company Pty Ltd

Product Matrix

Branch/Product	Brisbane	Head Office	London	Los Angeles
\$29.95 Recharge Card				
\$99.95 Recharge Card				
7250 Lifestyle Pack				
A/C ADAPT WITH FEMALE CIG	2		2	
A1000				
AC FAST CHARGER SAMSUNG S			19	
ADSL 1 port modum			5	
ADSL 4 Port WiFi Modum			5	
ALC EASY/VIEW/MAX BATT U	1		3	
ANT MOT 5200/7200	2			5
Antenna Ericsson T28	20			
BAT MOTO STARTAC NIMH SU				

Ready NUM

Microsoft Excel - PSStockProdMatrix[1]

File Edit View Insert Format Tools Data Window Help

200% 10

A3 Product Matrix

	A	B	C	D	E
1	My Company Pty Ltd				
3	Product Matrix				
4	Branch/Product	Brisbane	Head Office	London	Los Angeles
5	\$29.95 Recharge Card				
6	\$99.95 Recharge Card				
7	7250 Lifestyle Pack				
8	A/C ADAPT WITH FEMALE CIG	2		2	
9	A1000				
10	AC FAST CHARGER SAMSUNG S			19	
11	ADSL 1 port modum			5	
12	ADSL 4 Port WiFi Modum			5	
13	ALC EASYVIEW/MAX BATT LI	1		3	
14	ANT MOT 5200/7200	2			5
15	Antenna Ericsson T28	20			
16	BAT MOTO STARTAC NIMH SLI				

Ready NUM



Stock Report



Stock Report Snapshot Report

Select Report Product Matrix (15)

Report Help

Expand All Records

OK

Please select branches

- Brisbane (102) Los Angeles (700) San Francisco (908)
 Head Office (100) Melbourne (105) Sydney (105)
 London (808)

Now, let's have a look at the **Snapshot reports**



Stock Report



Stock Report Snapshot Report

Stock Snap Shot

Stock snapshot is a copy of stock on hand. The System has been scheduled to take a snapshot of stock on hand. The System keeps 12 months of snapshots. You may also perform a MANUAL snapshot.

Create Manual Stock Snap Shot

OK

Note: System will copy stock for all branches. You can only perform one snapshot per day.

Select Report Products By Location

Snapshot Date 31/07/2008

Expand All Records

OK

Please select branches

- Brisbane (102) Los Angeles (700) San Francisco (908)
 Head Office (100) Melbourne (105) Sydney (105)
 London (808)

The **Snapshot** is simply a copy of stock on hand, captured for a particular date.

The reason why you may want to take a snapshot of stock is because the ClickPOS system only holds the stock that is current. Your accounts department may be required to know what the value of stock holding is at the end of each month.

You cannot produce a stock holding report for past dates unless you have taken a snapshot on the day.

Please note that ClickPOS provides End-of-month snapshots automatically. However we suggest you check the reports to see if new snapshot has been created on the next working day of a new month.



Stock Report



Stock Report Snapshot Report

Stock Snap Shot

Stock snapshot is a copy of stock on hand on a particular date.

The System has been scheduled to automatically make a copy of stock on the LAST DAY OF EACH MONTH.

System keeps 12 months of snapshots. Prior dates are automatically deleted.

You may also perform a MANUAL snapshot of stock, used for when you perform stock-take.

Create Manual Stock Snap Shot Now.



Note: System will copy stock for all stores.

You can only perform one snapshot per day. If you perform more than one snapshot for the same day, consecutive snapshots for that day will overwrite the existing ones

To create a snapshot of stock, click the OK button. Then refresh the page to select the snapshot date below, to view the content of the report.

Select Report

Snapshot Date

Expand All Records



Please select branches

- Brisbane (102) Los Angeles (700) San Francisco (900)
 Head Office (100) Melbourne (105) Sydney (106)
 London (808)



Stock Report



Stock Report Snapshot Report

Stock Snap Shot

Stock snapshot is a copy of stock on hand on a particular date.

The System has been scheduled to automatically make a copy of stock on the LAST DAY OF EACH MONTH.

System keeps 12 months of snapshots. Prior dates are automatically deleted.

You may also perform a MANUAL snapshot of stock, used for when you perform stock-take.

Create Manual Stock Snap Shot Now.



Note: System will copy stock for all stores.

You can only perform one snapshot per day. If you perform more than one snapshot for the same day, consecutive snapshots for that day will overwrite the existing ones

Select Report

Snapshot Date

Expand All Records



Please select branches

- Brisbane (102) Los Angeles (700) San Francisco (900)
 Head Office (100) Melbourne (105) Sydney (106)
 London (808)

Now, you can see the date of the snapshot is for today.

We will view an example report.



Stock Report



Stock Report Snapshot Report

Stock Snap Shot

Stock snapshot is a copy of stock on hand on a particular date.

The System has been scheduled to automatically make a copy of stock on the LAST DAY OF EACH MONTH.

System keeps 12 months of snapshots. Prior dates are automatically deleted.

You may also perform a MANUAL snapshot of stock, used for when you perform stock-take.

Create Manual Stock Snap Shot now.



Note: System will copy stock for all stores.

You can only perform one snapshot per day. If you perform more than one snapshot for the same day, consecutive snapshots for that day will overwrite the existing ones

Select Report

Snapshot Date

Expand All Records



Please select branches

- Brisbane (102) Los Angeles (700) San Francisco (909)
 Head Office (100) Melbourne (105) Sydney (106)
 London (808)



Stock Report



Stock Report Snapshot Report

Stock Snap Shot

Stock snapshot is a copy of stock on hand on a particular date.

The System has been scheduled to automatically make a copy of stock on the LAST DAY OF EACH MONTH.

System keeps 12 months of snapshots. Prior dates are automatically deleted.

You may also perform a MANUAL snapshot of stock, used for when you perform stock-take.

Create Manual Stock Snap Shot now.



Note: System will copy stock for all stores.

You can only perform one snapshot per day. If you perform more than one snapshot for the same day, consecutive snapshots for that day will overwrite the existing ones

Select Report

Snapshot Date

Expand All Records



Please select branches

- Brisbane (102) Los Angeles (700) San Francisco (909)
 Head Office (100) Melbourne (105) Sydney (106)
 London (808)



Stock Report



Stock Report Snapshot Report

Stock Snap Shot

Stock snapshot is a copy of stock on hand on a particular date.

The System has been scheduled to automatically make a copy of stock on the LAST DAY OF EACH MONTH.

System keeps 12 months of snapshots. Prior dates are automatically deleted.

You may also perform a MANUAL snapshot of stock, used for when you perform stock-take.

Create Manual Stock Snap Shot now.

OK

Note: System will copy stock for all stores.

You can only perform one snapshot per day. If you perform more than one snapshot for the same day, consecutive snapshots for that day will overwrite the existing ones

Select Report

Snapshot Date

Expand All Records

OK

Please select branches

- Brisbane (102) Los Angeles (700) San Francisco (909)
 Head Office (100) Melbourne (105) Sydney (106)
 London (808)



Stock Report



Stock Report Snapshot Report

Stock Snap Shot

Stock snapshot is a copy of stock on hand on a particular date.

The System has been scheduled to automatically make a copy of stock on the LAST DAY OF EACH MONTH.

System keeps 12 months of snapshots. Prior dates are automatically deleted.

You may also perform a MANUAL snapshot of stock, used for when you perform stock-take.

Create Manual Stock Snap Shot now.

OK

Note: System will copy stock for all stores.

You can only perform one snapshot per day. If you perform more than one snapshot for the same day, consecutive snapshots for that day will overwrite the existing ones

Select Report

Snapshot Date

Expand All Records

OK

Please select branches

- Brisbane (102) Los Angeles (700) San Francisco (909)
 Head Office (100) Melbourne (105) Sydney (106)
 London (808)

Stock Report

Stock Report Snapshot Report

ClickPOS Online - Windows Internet Explorer

http://216.14.207.186/pstestnet/reports/PSSnapShotReportView.aspx?SnapDate=26/10/2008&checked=true&rptName=2-1-1&rptDesc=Products By

1 of 4 150% Find | Next Select a format Export

My Company Pty Ltd
Products By Location (2-1-1s)
 Snapshot Date: 26/10/2008

Purchase Date	Barcode	Supplier Prod Code	Supplier	EntryDate	Pack Lot No	On Transit	Transit
Brisbane (225)							
<input type="checkbox"/> A/C ADAPT WITH FEMALE CIG (2)							
2/05/2001	9318018046394	CONCIG	Celinet	9/08/2002			Head
21/01/2002	9318018046394	CONCIG	Celinet	9/08/2002			Head
Total In Stock							
<input type="checkbox"/> ALC EASY/VIEW/MAX BATT U (1)							
11/05/2008	9318018943129	B02B	Brightpoint	11/05/2008			
Total In Stock							
<input type="checkbox"/> ANT MOT 5200/7200 (2)							

Stock Report

Stock Report Snapshot Report

ClickPOS Online - Windows Internet Explorer

http://216.14.207.186/pstestnet/reports/PSSnapShotReportView.aspx?SnapDate=26/10/2008&checked=true&rptName=2-1-1&rptDesc=Products By

1 of 4 150% Find | Next Select a format Export

My Company Pty Ltd
Products By Location (2-1-1s)
 Snapshot Date: 26/10/2008

Purchase Date	Barcode	Supplier Prod Code	Supplier	EntryDate	Pack Lot No	On Transit	Transit
Brisbane (225)							
<input type="checkbox"/> A/C ADAPT WITH FEMALE CIG (2)							
2/05/2001	9318018046394	CONCIG	Celinet	9/08/2002			Head
21/01/2002	9318018046394	CONCIG	Celinet	9/08/2002			Head
Total In Stock							
<input type="checkbox"/> ALC EASY/VIEW/MAX BATT U (1)							
11/05/2008	9318018943129	B02B	Brightpoint	11/05/2008			
Total In Stock							
<input type="checkbox"/> ANT MOT 5200/7200 (2)							



Stock Report



Stock Report Snapshot Report

Stock Snap Shot

Stock snapshot is a copy of stock on hand on a particular date.

The System has been scheduled to automatically make a copy of stock on the LAST DAY OF EACH MONTH.

System keeps 12 months of snapshots. Prior dates are automatically deleted.

You may also perform a MANUAL snapshot of stock, used for when you perform stock-take.

Create Manual Stock Snap Shot Now.

OK

Note: System will copy stock for all stores.

You can only perform one snapshot per day. If you perform more than one snapshot for the same day, consecutive snapshots for that day will overwrite the existing ones

Select Report

Snapshot Date

Expand All Records

OK

Please select branches

Brisbane (102) Los Angeles (700) San Francisco (800)

Head Office (100) Melbourne (105) Sydney (106)

London (808)



Tutorial Complete



 Double-Click to edit

